

Days Open

**2ND SATURDAY OF EVERY
MONTH AT WATHENA,**
1142 ST. COLUMBUS RD.,
ACROSS FROM THE TRANSFER STATION.

**4TH SATURDAY OF EVERY
MONTH AT HIGHLAND,**
AT THE COUNTY SHOP
SPRING ST.- EAST EDGE OF TOWN.



THANK YOU FOR RECYCLING!

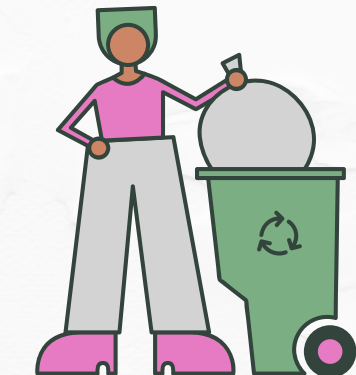
Contact Us

**DONIPHAN COUNTY
SERVICES & WORKSKILLS:**
785-990-0855

WASTE MANAGEMENT:
1-800-964-8988
OR 816-901-9275



*Doniphan County
Recycling*



PRODUCED BY
TROY HIGH SCHOOL
MEDIA TECH



Accepted Items



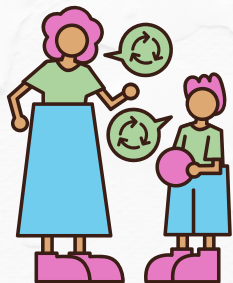
PLASTIC

ALL PLASTIC ITEMS
NUMBERED #1-7
WITH RECYCLING
TRIANGLES ON THEM

INCLUDES...

- PLASTIC JUGS & BOTTLES
- PLASTIC BOTTLE CAPS
- YOGURT OR MARGARINE TUBS
- DELI/SALAD BAR CLAMSHELLS ETC.

NO PLASTIC BAGS
NO STYROFOAM



GLASS

(ANY COLOR)



METAL

METAL CANS
(FOOD & BEVERAGE CANS MADE OF
TIN OR ALUMINUM)



ALUMINUM FOIL & ALUMINUM PIE TINS

PAPER



NEWSPAPERS, MAIL, OFFICE
PAPER, MAGAZINES,
CATALOGUES, ETC.



CARDBOARD

CORRUGATED &
PAPERBOARD
(FLATTEN CARDBOARD)



**ITEMS SHOULD BE RINSED
AND/OR CLEAN AND SORTED.**

**PLEASE DO NOT PUT PLASTIC
BAGS CONTAINING RECYCLABLE
ITEMS IN THE BINS.
WE DO NOT ACCEPT PLASTIC BAGS.**

**SHREDDED PAPER SHOULD BE
BROUGHT IN A PAPER BAG,
NOT A PLASTIC BAG.**

**WE DO NOT ACCEPT STYROFOAM
IN ANY FORM OR BUBBLE WRAP
PACKING MATERIAL.**